

**Tillbridge Solar Project  
EN010142**

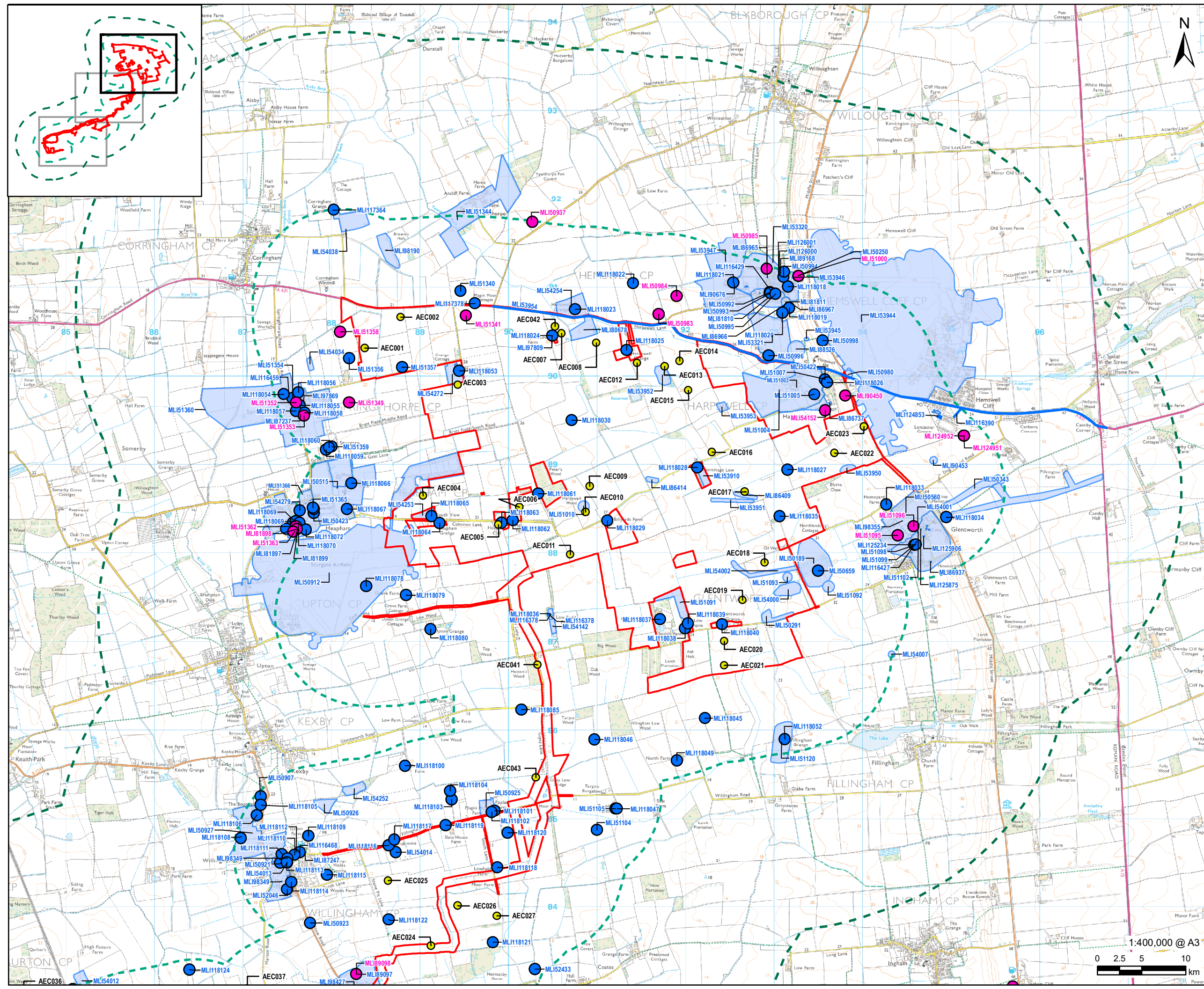
**Volume 6  
Environmental Statement  
Figure 8-3: Non Designated Heritage Assets  
Document Reference: EN010142/APP/6.3**

**Regulation 5(2)(a)  
Infrastructure Planning (Applications: Prescribed Forms and  
Procedure) Regulations 2009**

**April 2024  
Revision Number: 00**

**tillbridgesolar.com**

---



# AECOM

**PROJECT**  
Tillbridge Solar Project

**CLIENT**  
Tillbridge Solar Ltd

**CONSULTANT**  
Aldgate Tower  
2, Leman Street  
London, E1 8FA  
United Kingdom  
T +44-0207-645-2000

**LEGEND**

- Order limits
- 1km Buffer
- 3km Buffer
- Assets identified by archaeological survey
- Find Spot
- HER Monument - Point
- HER Monument - Line
- HER Monument - Polygon

**NOTES**

Contains Ordnance Survey Data © Crown Copyright and database right 2023. Ordnance Survey 0100031673  
© Historic England 2023. Contains Ordnance Survey data © Crown copyright and database right 2023. The Historic England GIS Data contained in this material was obtained in 2023.

**ISSUE PURPOSE**  
DCO Submission

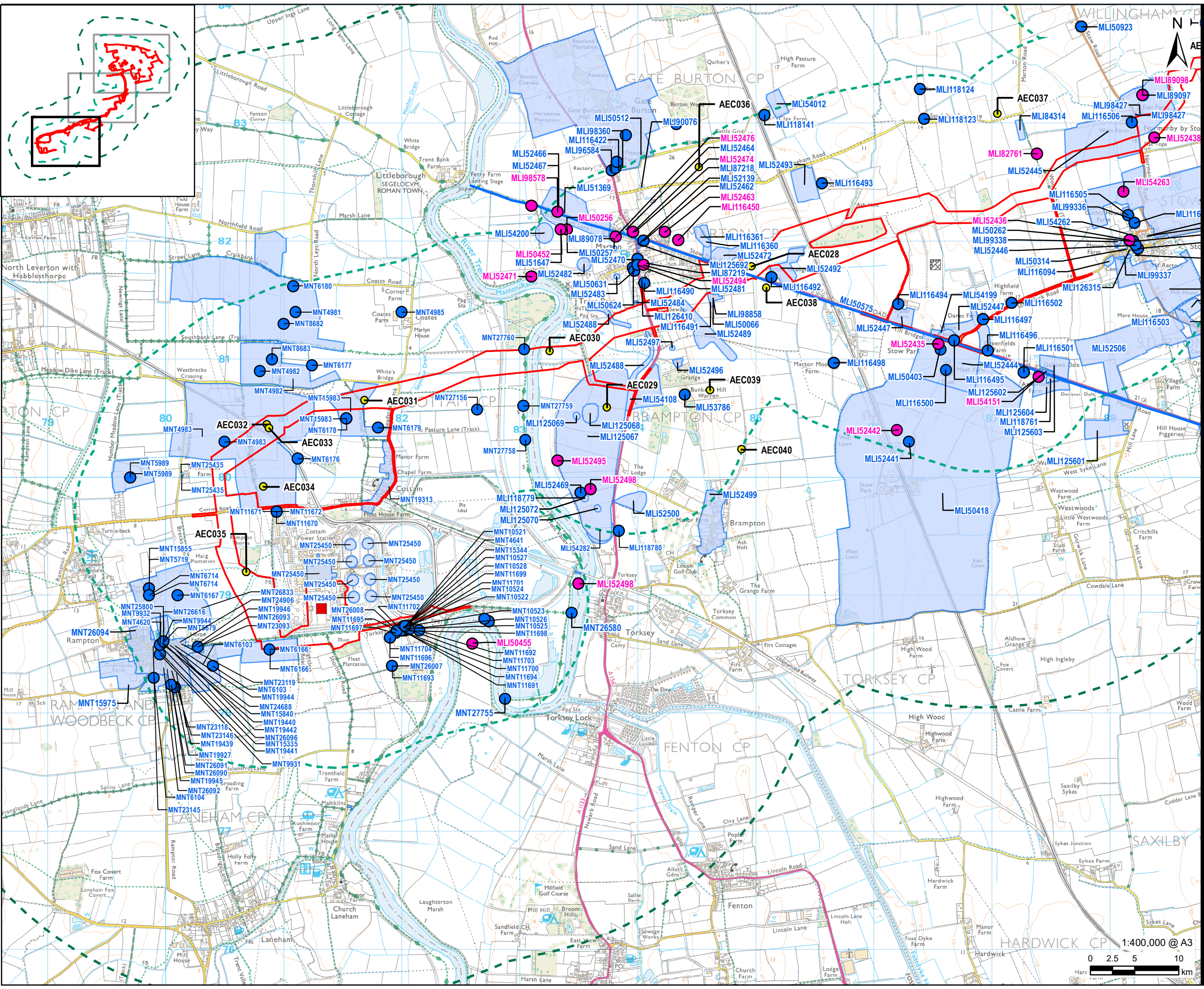
**PROJECT NUMBER**  
60677969

**FIGURE TITLE**  
Non-Designated Heritage Assets

**FIGURE NUMBER**  
Figure 8-3A

This drawing has been prepared for the use of AECOM's client. It may not be used, modified, reproduced or relied upon by third parties, except as agreed by AECOM or as required by law. AECOM accepts no responsibility, and denies any liability whatsoever, to any party that uses or relies on this drawing without AECOM's express written consent. Do not scale this document. All measurements must be obtained from the stated dimensions.





# AECOM

**PROJECT**  
Tillbridge Solar Project

**CLIENT**  
Tillbridge Solar Ltd

**CONSULTANT**  
Aldgate Tower  
2, Leman Street  
London, E1 8FA  
United Kingdom  
T +44-0207-645-2000

**LEGEND**

- Order limits
- 1km Buffer
- 3km Buffer
- Assets identified by archaeological survey
- Cottam Power Station
- Find Spot
- HER Monument - Point
- HER Monument - Line
- HER Monument - Polygon

**NOTES**

Contains Ordnance Survey Data © Crown Copyright and database right 2023. Ordnance Survey 0100031673  
© Historic England 2023. Contains Ordnance Survey data © Crown copyright and database right 2023. The historic England GIS Data contained in this material was obtained in 2023.

**ISSUE PURPOSE**  
DCO Submission

**PROJECT NUMBER**  
60677969

**FIGURE TITLE**  
Non-Designated Heritage Assets

**FIGURE NUMBER**  
Figure 8-3C

Scale: 1:400,000 @ A3  
0 2.5 5 10 km

This drawing has been prepared for the use of AECOM's client. It may not be used, modified, reproduced or relied upon by third parties, except as agreed by AECOM or as required by law. AECOM accepts no responsibility, and denies any liability whatsoever, to any party that uses or relies on this drawing without AECOM's express written consent. Do not scale this document. All measurements must be obtained from the stated dimensions.